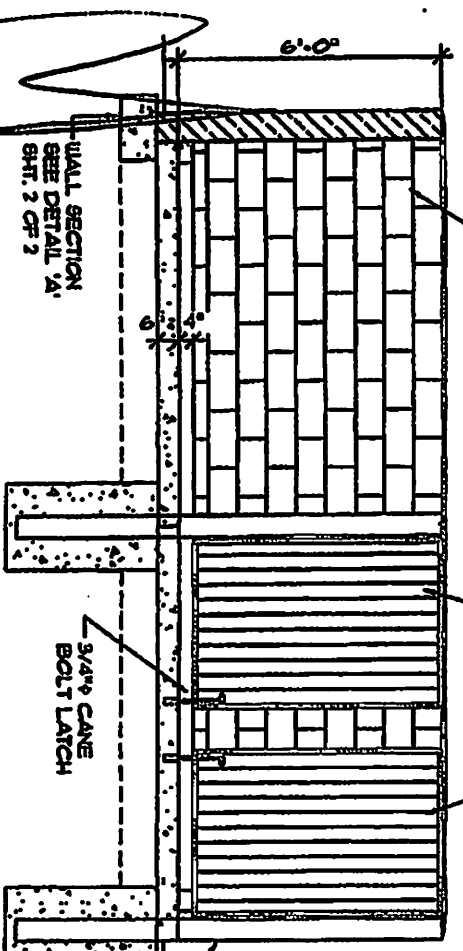


ENCLOSURE FOR 2-THREE YARD DUMPSTERS
1/4"-1'-0" FORWARD APPROACH - PLAN VIEW

ENCLOSURE FOR 2-THREE YARD DUMPSTERS
1/4"-1'-0" FACING EACH OTHER - PLAN VIEW

NOTE: COMMERCIAL RECYCLING TRASH ENCLOSURE SHOWN FOR TWO CONTAINERS; INDUSTRIAL ENCLOSURES SHALL PROVIDE SPACE FOR THREE CONTAINERS USING THE DIMENSIONS FOR THE INDIVIDUAL CONTAINER CONFIGURATION ILLUSTRATED ABOVE.

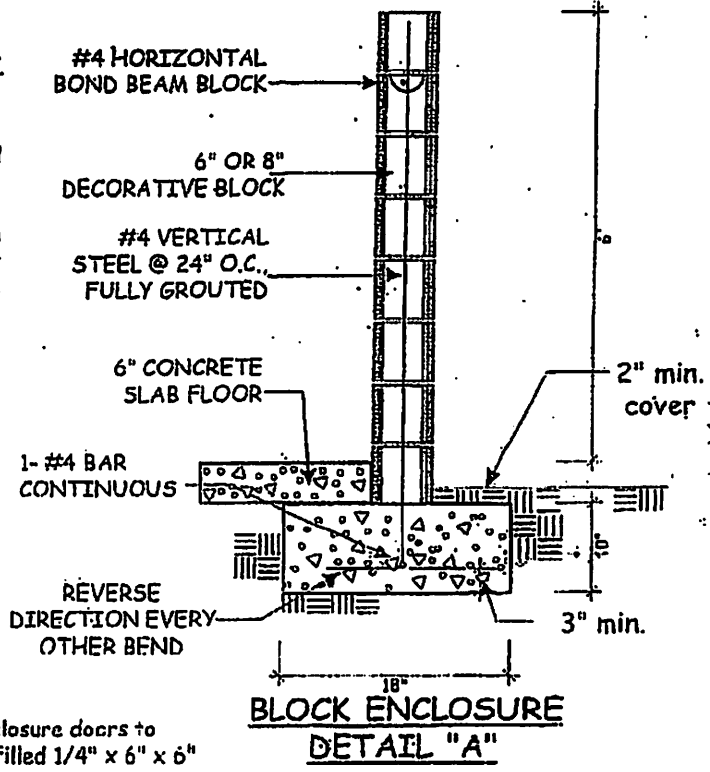


SECTION 'X'
1/4"-0'-0" TRASH ENCLOSURE STANDARDS

CR&R INCORPORATED
 31641 ORTEGA HWY
 SAN JUAN CAPISTRANO, CA 92675
 PO BOX 1100
 SAN JUAN CAPISTRANO, CA 92693
 TEL: (949) 728-0446
 www.southcoastrecycling.com

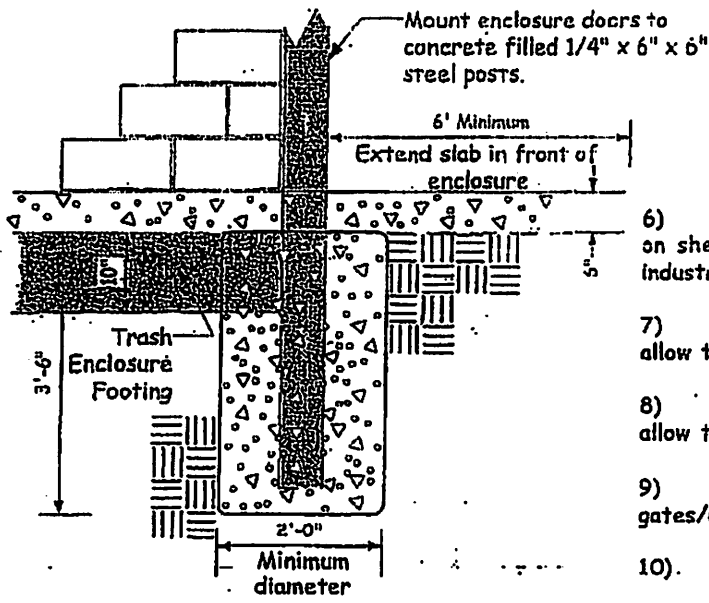
CONSTRUCTION STANDARDS

- 1) Walls are to be of decorative block, masonry, or similar materials. (Not precision block)
- 2) Gates are to be of solid construction.
- 3) Pedestrian access is required if in residential or multi-tenant areas. Consult with the Planning Department for those requirements.
- 4) Double swing gates shall have the swivel spots outside of the opening area of the enclosure. Swivel points shall be attached to concrete filled steel posts/columns at ends of walls.
- 5) Enclosure shall be on a level pad at ground level. The area between the pad and the pick up area shall be a paved area 6' deep for the width of the enclosure and shall not exceed a grade of 2 percent.



SIZE REQUIREMENTS

- 6) Minimum inside dimensions shall be as shown on sheet 2 of 2 of this standard for commercial, industrial and multi-tenant facilities.
- 7) Commercial enclosures shall be configured to allow the enclosure of two-three yard dumpsters.
- 8) Industrial enclosures shall be configured to allow the enclosure of three-three yard dumpsters.
- 9) Each bay shall have a separate pair of gates/doors that comply with item #2 above.
- 10) Minimum wall and gate height to be 6'-0"



TRASH ENCLOSURE DOOR FOOTING DETAIL "B"